

514S Freestyle Fun Tuesday 9th July

Session: 2 x 3hr

Level: All Levels

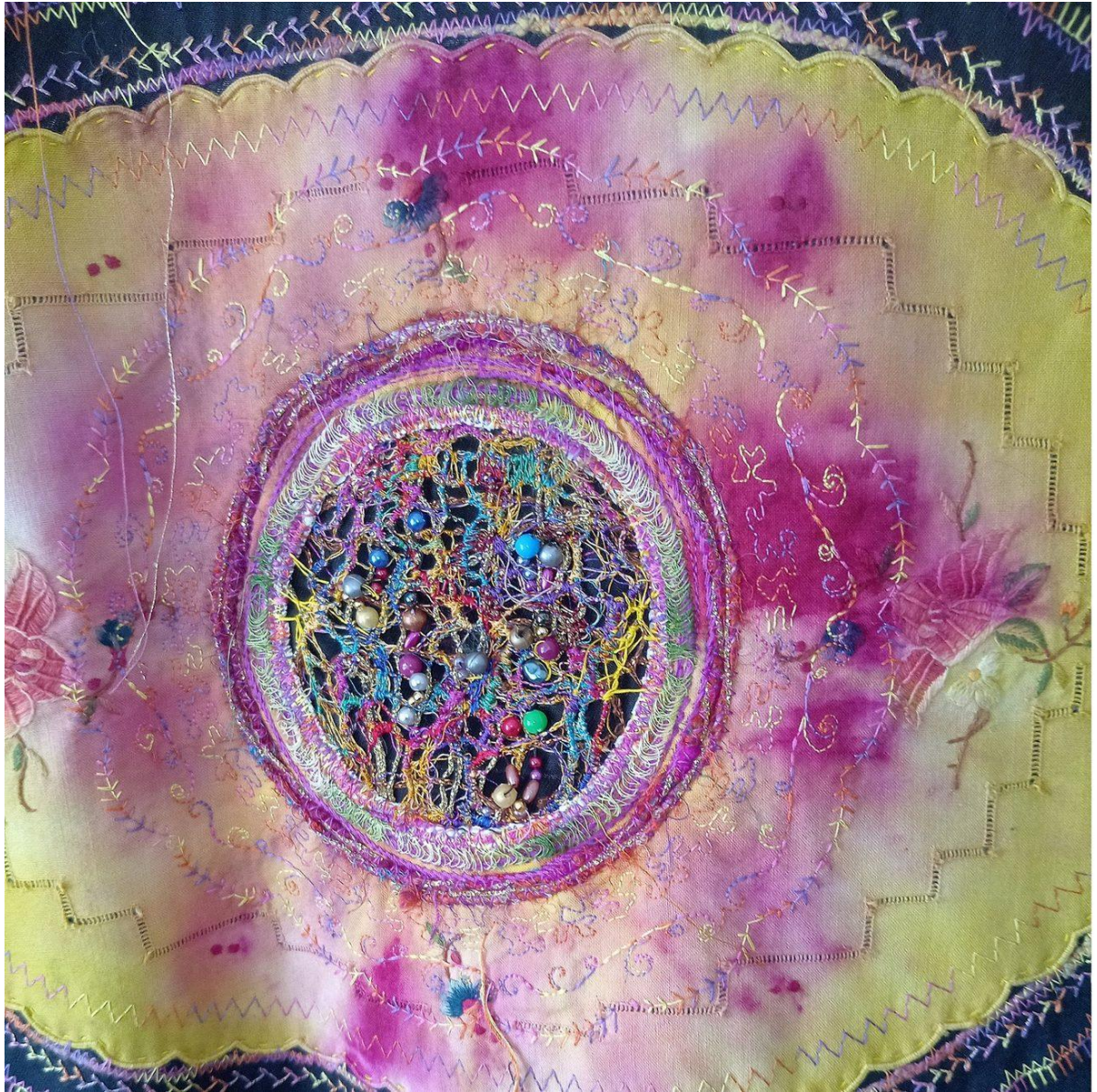
Annette McMaster

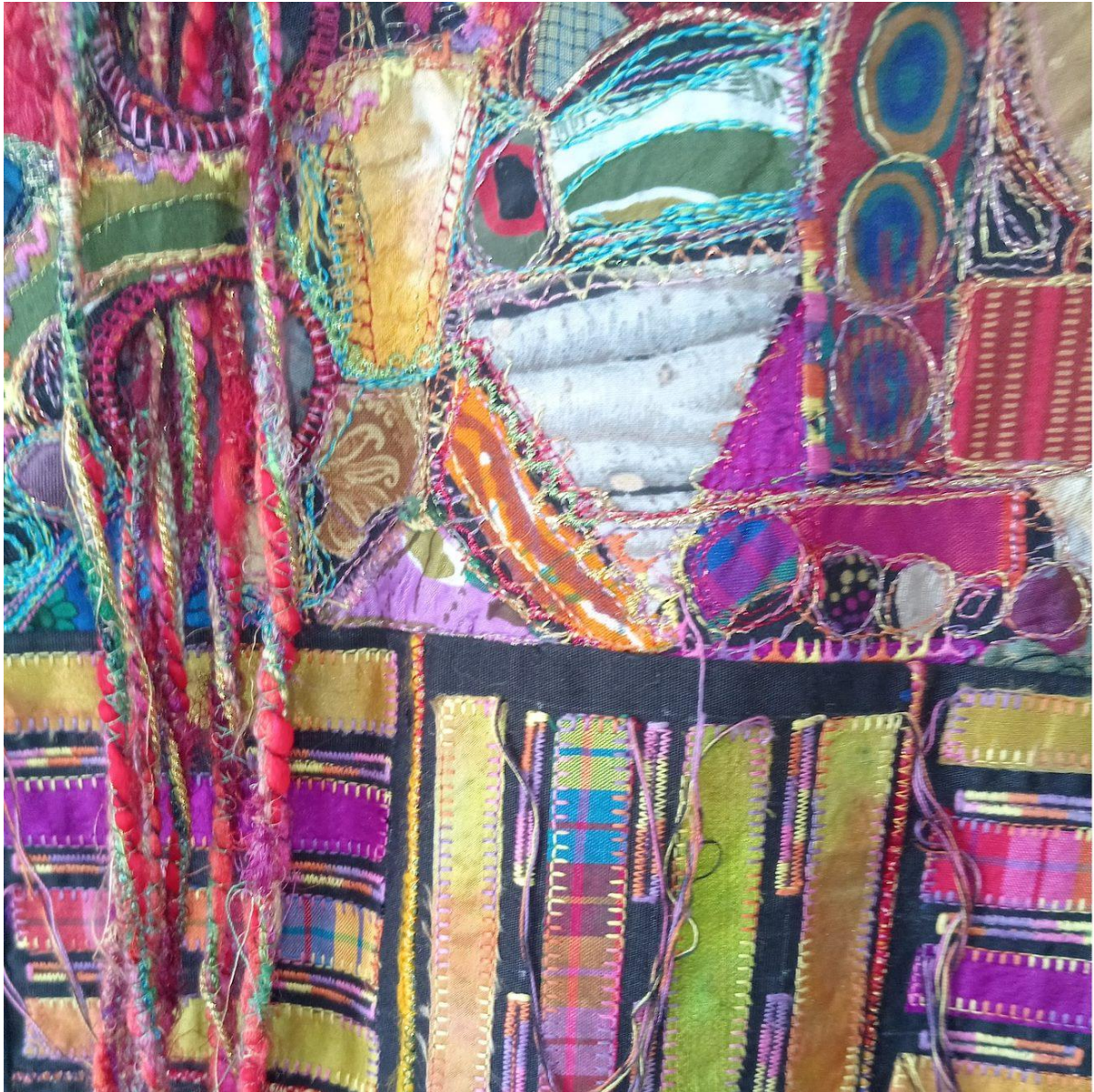


Annette explores a variety of art practices, which are mostly inspired by her immediate environment. In most of her work, the domestic and natural world has been portrayed in layers of meaning; whether quilting, machine and hand embroidery, beading, painting, collage, papier maché constructions, recycling or drawing. Annette is drawn to anything which has associations with the domestic, feminine and natural worlds. Annette believes that being open to any stimuli that cross her path might be the start of new work, whether old torn photographs, invitations from galleries, found objects or exploring new media. The creative process is likened to an archaeological discovery

of both process and inspiration during which the artwork dictates the course it wants to take. It is about rhythms, relationships, connections with the past, present and future ... that which is the skin of life.







Detailed Course Description

This is a basic technique class during which students will learn how to use an ordinary domestic sewing machine to create stunning effects like machine-made lace, wrapped cords, machine-sewn beads, eyelets, couched braids and fringes.

Student Requirements:

Basic sewing supplies

Sewing machine in good working order (must be able to lower the feed dogs)

Darning/free motion machine embroidery foot

Needles sizes 80(12) to 100(16) Embroidery and Metallic

A variety of threads – metallic, wool perlé, embroidery, machine embroidery threads, threads for the bobbin, stronger polyester threads

Scissors

Embroidery hoop - a sprung hoop is better (the one with the outer plastic hoop with the metal sprung inner ring) but bring what you have.

Bobbins – quite a few

Fabric – approximately 25cm of plain fabric, backed with Vilene in either white, cream or a pastel colour

Small scraps of silk, netting, velvet, ribbon, buttons, lace, sequins

Beads – NB small plastic or small glass beads (but be aware that the glass ones can break if hit by the needle and fall into the machine)

25cm of netting – a few colours

Vegetable bags – onions are sold in them

Filter coffee packets – the metallic paper ones

Toothpicks

Tapestry or other big eye needles

Your sewing machine manual

Homework: Using a cereal box, cut out a 'picture frame' measuring 20x16cm on the outside and 9x13cm on the inside.